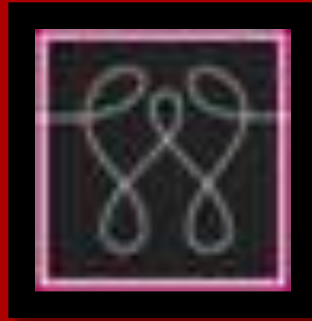




Williams Apparels Ltd.



Welcome To

Williams Apparels Ltd.

Quality Product is Our Commitment

Message from CEO

It gives me immense pleasure to introduce Williams Apparels Ltd. as a one of the most modern 100% export oriented fashionable apparels suppliers in Europe market. We supply wide range of fashionable apparels by using variety of fabrics, style, design, variations and etc. By adopting most modern and dynamic technology we are committed to fulfill the reliability that you need, the services & timely shipment that you deserve, and the quality & competitive price you expect. Our major philosophy is to satisfy our customers for long term business.

As a matter of principle, Williams Apparels Ltd. possesses a state-of-the-art management system complying all international Compliance, CSR Codes & Standards of Quality and workplace safety which can easily satisfy the highest demands of our buyers. We maintain an unparalleled Merchandising Management, Quality Management, Compliance & CSR Management and strong Supply Chain Management System in the field of Bangladesh Garments Industry by which we can ensure environment friendly quality production of garment to satisfy our buyers. We firmly believe that, we can face the challenges of the coming years with confidence and competitive edge with the power of backward linkage industries of garments sector.

On behalf of Williams Apparels Ltd. I welcome you to visit our office and factory units just to have a spot impression and understanding of our commitment toward the advanced garment industry and environment friendly quality garments production which will ensure your desire expected product.

Thank to be with us & my heartiest wishes for you.

Rashidul Alam (Selim)

Managing Director

selim@williamsbd.com

Company Features :



Creative and usable
design
and
development

- Exporting Garments Since 1984.
- Quality Product is our Commitment.
- Highly Experienced Merchandising Team.
- Supreme Standards of Fabrics, Trims & Accessories Sourcing.
- Buyer wise Key Account Merchandiser.
- Well Experienced Quality & Technical Team.
- Well Experienced Commercial Team.
- Salesman Sample as per Buyers Target Timeline.
- On Time Shipment as per TNA Program.
- Competent “Compliance & CSR” Department.
- Sound “Design & Development” Department.
- Highly Compliance & ACCORD/ALLIANCE Approved Factory.
- Factories are BSCI, SEDEX, OEKOTEX, WRAP, GOT, BEPI, ICS, OCS Certified.
- Sound Supply Chain Management System.

Code of Conduct :



- Corporate Social Responsibility (CSR)
- Decent Working Hour.
- Fair Remuneration.
- Freedom of Association.
- Occupational Health & Safety.
- No Child Labor.
- No Forced Labor.
- No Discrimination.
- No Precarious Employment.
- Special Protection of Young Worker.
- Ethical Business Behavior.
- Protection of Environment.
- Anti-Harassment & Anti Bribery.
- Animal Welfare & Protection.

Compliance & CSR Features :



- Experienced Compliance & CSR Department.
- All Factory is Highly Compliance & CSR Oriented Factory.
- Periodical Factory Compliance & CSR Audit & Assessment by our CSR Manager.
- Our most of the factories are ACCORD/Alliance Approved Factory.
- ACCORD listed factories status 90 % done.
- Our most of the Factory is BSCI, OEKOTEX, SEDEX, WRAP, GOT, OCS, ICS, Certified.
- Factory Compliance CSR ensured as per BSCI, ICS, BEPI, ILO, ETI and Labor Law.
- Factory Ensured Medical & Child Care Facilities as per law.
- High Standard Factory Health & Safety System.
- Fire Safety Ensured by ACCORD-Fire Door & Detection System.
- Electrical Safety Ensured by Modern Electrical Equipment's by ACCORD guidelines.
- Structural Safety is Ensured by ACCORD/Alliance Inspections guidelines.
- Chemical Safety Ensured by Modern MSDS System.

Merchandising Departments :

Merchandising Wings :



**Woven
Department.**



**Circular
Knit
Department.**



**Flat Knit
Department.**

Merchandising Setup:

Team Leader.

Sr. Merchandiser.

Merchandiser.

Merchandiser.

Asst. Merchandiser.

Merchandising Strengths :

Woven Department :

Williams Apparels Ltd. has a full-fledged systematic and planned woven department setup where all team members of woven departments is highly experienced and specialized in woven garments. Woven department specialized on shirts, blouses, pants, shorts, denim products, skirts, trousers, jackets, carpi, active wears, sports wears, night wears and uniforms. As per assigned job descriptions woven department smoothly follow up all key activities from Fabric booking to final shipment and ensured supreme satisfaction of buyers.

Circular Knit Department :

Williams Apparels Ltd. has very well organized Circular Knit Merchandising Wings who are specialized on various types of Circular knit Products such as T-shirt, Polo Shirts, Tank Top, Pullovers, Long Dress, hoody, boxers, lingerie's, night wears, sportswear, active wears and uniforms. As per departmental organogram and assigned job descriptions Circular knit department efficiently supervised all key activities from Yarn booking to shipment for accomplishment of buyers all requirements.

Flat Knit Department :

We are very much specialized and expertise on modern Flat Knitwear's Products and we have very efficient Merchandising team for Flat Knitwear's management. Global demands of sweater are increasing day by day and people are becoming more fashionable day by day & they are running for more fashionable products. Emphasizing on this point of view, our Design & Development department always working for aesthetic & fashionable products to satisfy the potential demands of the buyers.

Quality & Technical Department :

**Quality Assurance & Technical
Manager**



**Factory Wise Quality Assurance
Inspectors**



**AQL 2.5 Inspections Done by
The Q.A Team**

Quality Management Process :

-
- ❑ Environment Friendly Quality Product is the Commitment of Williams. To ensure this Williams has highly experienced and professional Quality Control and Quality Assurance Team to make the commitment successful. The objectives of Williams quality management system is very clear, firm, achievable and measurable because it's maintained by a systematic way. Williams Quality Department works on the basis of PDCA cycle- Plan, Do, Check and Act.
 - ❑ Williams Quality Management System Includes ;
 - Understanding the Customers' Quality Requirements.
 - Establish the desired quality standards which are acceptable to the Buyers.
 - Ensure the Needs, Wants, Demands and characteristics of a product.
 - Organizing & Training Quality Control Department.
 - Ensuring Proper Flow of Quality Requirements to the QC Department.
 - Ensuring Proper Flow of Quality Requirements to the Production Department.
 - Establishing Quality Plans, Parameters, Inspection Systems, Frequency, Sampling Techniques, Etc...
 - Inspection, Testing, Measurements As Per Plan.
 - Record Deviations.
 - Feed Back to Production Department..
 - Plan for Further Improvement.
-

Design & Development Department :

Functions :

- Research New Styles & Trends.
- Sourcing New Styles & Trends.
- New Product Design as per new Styles & Trends.
- New Product Development as per new Styles & Trends.
- Product Re-Design as per Buyers requirements.
- Development of Products as Per Buyers Sample.
- Updates Buyers for new style, trends & development.

Developments :



Our Products – Woven :

- Woven Shirts.
- Woven Pants.
- Woven Capri.
- Woven Skirts.
- Woven Trousers.
- Woven Blouses.
- Woven Jackets.
- Cargo Pants.
- Ladies Dress.
- Denim Pants.
- Chino Pants.
- Active Wears.
- Sports Wears.
- Uniforms.



Our Products – Flat Knit :

- Pullover.
- Cardigan.
- Vest.
- Pancho.
- Jumpers.
- Tops.
- Scarfs.
- Mufflers.



Our Products – Circular Knit :

- Polo Shirt.
- T-Shirt.
- Hoody.
- Jackets.
- Pullovers.
- Tank Tops.
- Blouses.
- Long Dress.
- Shorts.
- Lingerie's.
- Night Wears.
- Trousers.
- Leggings.
- Sports Wears.
- Active Wears.



Fabrics Specializations

Woven Fabrics

- Denim Fabrics.
- Twill Fabrics.
- Knit Denim Fabrics.
- Satin Fabrics.
- Poplin Fabrics.
- Viscose Fabrics.
- Flannel Fabrics.
- Bengaline Fabrics.
- Shamray Fabrics.
- Oxford Fabrics.
- Sheeting Fabrics.
- Canvas Fabrics
- Taffeta fabric.
- Tissue fabric.
- Mesh fabric.
- Velvet fabric.
- Cambric fabric.
- Chiffon fabric.
- Corduroy fabric.
- Crepe fabric.
- Gabardine fabric.

Denim Specials

- Raw Denim Fabrics.
- Organic Denim Fabrics.
- Knitted Denim Fabrics.
- Dry Denim Fabrics.
- Slab Denim Fabrics.
- Stretch Denim Fabrics.
- Vintage Denim Fabrics.
- Poly Denim Fabrics.
- Ramee Cotton Denim Fabrics.
- Cotton Serge Denim Fabrics.
- Colored Denim Fabrics.
- Bubblegum Denim Fabrics.
- Crushed Denim Fabrics.
- Ecrú Denim Fabrics.
- Marble Denim Fabrics.
- Bull Denim Fabrics.
- Reversed Denim Fabrics.
- Printed Denim Fabrics.
- And etc.

Circular & Flat Knit Fabrics

- Single jersey fabric
- Double jersey fabric
- Rib fabric,
- Interlock fabric,
- Piquet fabric,
- Lacoste fabric,
- Fleece fabric.
- Cotton jersey knit.
- Cotton ribbed knit.
- Cotton lycra
- cotton spandex knit.
- French terry knit.
- Sweatshirt fleece.
- Jersey rayon spandex.
- Lycra spandex.
- Interlock Knitting Fabric
- Pique Knit Fabric
- Poly Knitting Fabric
- Tricot Knit Fabric
- Micro Knitting Fabric
- Polyester Warp Knit Fabric
- Blended Knitted Fabric
- Warp Knitted Fabrics
- Pineapple Knit.
- Bubble Knit.
- Diamond Knit.
- Jersey Knit.
- All kinds of Rib Knit.
- Stair Knit
- Tuck Stitch Knit.
- Reverse Knit
- Pointal Knit.
- And etc.

Our Products Show Room

Circular Knit – Show Room



Williams Apparels Ltd.

Our Products Show Room

Woven - Show Room



Williams Apparels Ltd.

Our Products Show Room

Flat Knit - Show Room



Our Customers :

Dansk
Supermarked
Group

jbs

ChaCha

COOP

BALLGROUP

btx
group

chape
MERCHANDISING

wenaas

CD COMPANY

JEANS
fritz

Brandtex

next
NEXT.CO.UK

uhlsport

Tailor's

Kempa

SPALDING

BOS
BRANDS OF SCANDINAVIA

startex

NN

FBI.

VOICE. Fashion
group

DESIRE

peppercorn

SOLID
DENMARK

We love our customers

Our Bank & Trade System :

Our Bank :



Bank Asia Limited.

(Gulshan Branch)

Bay's Galleria, 57 Gulshan Avenue,
1212 Dhaka, Bangladesh.

Bank Swift ID :

BALBBDDH004

Our Trade System :



Trade Term:

For Sea Shipment:

FOB -for sea Chittagong.

For Air Shipment:

Air by Shahajalal International Airport.
Dhaka.

Payment Term:

By irrevocable and transferable Letter of
Credit-LC and TT- Telegraphic Transfer.

Contact with us :



Contact :

Rashidul Alam (Selim)

Managing Director.

Williams Apparels Ltd.

selim@williamsbd.com

Office Address:

Road No. 4, House 301, D.O.H.S. Baridhara.

Dhaka-1206, Bangladesh

Phone: + 88-02-8411544

Fax: + 88-02-8411324

Email Address :

info@williamsbd.com

selim@williamsbd.com

Website : www.williamsbd.net

Thanks to be with us & Thanks for Your Time
